

Halyard Park, Brewers Hill, & Harambee NEIGHBORHOOD VISIONING SESSION

August 2019



The first Halyard Park, Brewers Hill, & Harambee Neighborhood Visioning Session took place at the Sojourner Family Peace Center on Aug. 10, 2019. The event was hosted by the Greater Milwaukee Foundation in partnership with the Medical College of Wisconsin (MCW), and Royal Capital. This session was facilitated by Piper Anderson, founder and president of Create Forward.

The partnership between the Foundation, the MCW, and Royal Capital is an investment in

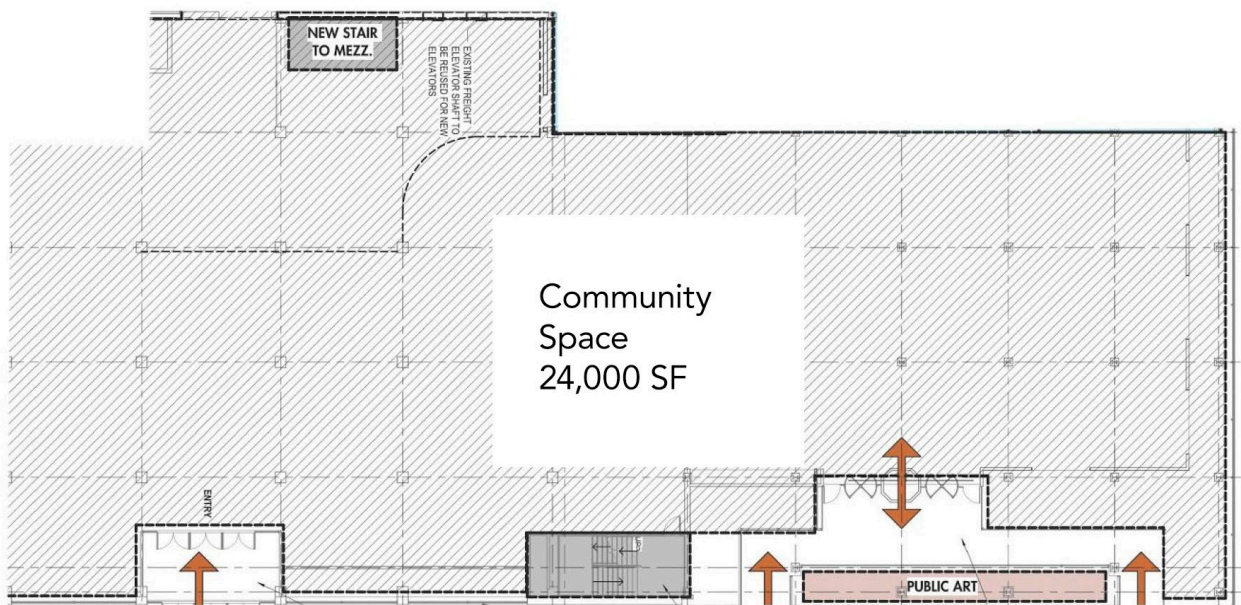
people and place. Our vision is for a Milwaukee that is equitable, healthy, and thriving for all. Achieving this vision requires focusing on places where the investment has been scarce and supporting people of color, who are disproportionately affected by disparities in our community. Guided by community priorities, this partnership will be a catalyst for improved health, equity and economic well-being in Halyard Park, Brewers Hill, and the Harambee neighborhood and rippling out beyond.

During the visioning session, residents and key stakeholders voices learned more about the priorities and ideas that are being used in the creation of our new community-based partnership, restoration, and redevelopment of the former Gimbel's-Schuster's Department Store, which will become the Foundation's new home, offices for MCW, and house the partnership.

On this day residents and key stakeholders made the choice to be present for themselves and their community. The session began with a welcome and an overview of the partnership from Ellen Gilligan, Foundation President & CEO. Tom Joy, an architectural designer with Engberg Anderson Architect, provided the group with details on the project and specifically on the first floor community space. There was robust discussion in both the small and large groups. Residents offered questions and opinions about the partnership and community space and what type of programming investments are needed in the surrounding neighborhoods.

I used to think that the moment I was proudest of the community I lived in was when I finished my house. Now I know that it is every time I walk through seeing the my neighborhood and seeing the number of homes that have been improved, how people are keeping up their properties, and how people make a point of knowing and caring about each other.

-Mr. Gibson, resident and neighbor



Over the course of the three-hour session, the community focused on ways the first floor community space can benefit and strengthen the community along with any questions and concerns they had about the project.



Each person was given time and space to share stories filled with all of the emotions that surround their fondest memories from years of work and play in the neighborhood.

They then engaged in a discussion focused on ways that the Foundation and MCW can not only be good neighbors, but also contribute to the existing fabric of the community. From this, residents and key stakeholders were prompted to answer the following four questions:

How can the Foundation and MCW be good neighbors?

- Provide opportunities for community projects or resident education
- Property managers should be vested in the success of the building and neighborhood
- Walk the community
- Create more green space, sitting, and walking spaces
- Ample parking
- Employment

What are your ideas for the 24,000 sq. ft. community space?

- Carts/pop-up
- Art studios/classes
- Community meeting/banquet space
- Business incubator with guidance through the whole process
- Greenery on parking structure
- Food/farmers market/restaurant

What are your ideas for how the partnership can support the surrounding community?

- Community calendar

What are your questions or concerns?

- How many residential parking spots will there be?
- Questions about representation in the overall project and gentrification and we will address at our next session
- Concerns about displacement plan as it exists now
- Involve the neighbors from the beginning

Through a beautiful display of support and community, energy and dialogue filled the room as every voice and idea was uplifted.

This gathering was truly a testament to the fact that we are greater together and knowledge changes lives.



The beauty of living in this area is the support, interaction, and relationships I have with my neighbors

-Mr. Addison, resident and neighbor



PLEASE JOIN US FOR A NEIGHBORHOOD VISIONING SESSION

Come share your ideas on how to redevelop and restore the former Gimbels-Schuster's Department Store on MLK Drive.

Saturday, Sept. 14, 2019

11 a.m.-2 p.m.

America's Black Holocaust Museum

401 W. North Ave.

Milwaukee, WI 53212

Friday, Oct. 11

5 - 8 p.m.

On the Bayou

2053 N. Dr. Martin Luther King Jr. Dr.

Milwaukee, WI 53212

For more details and to register, greatermilwaukeefoundation.org/mcw

About the

GREATER MILWAUKEE FOUNDATION

The Greater Milwaukee Foundation is Wisconsin's largest community foundation and was among the first established in the world. For more than a century, the Foundation has inspired philanthropy by connecting generous people to community needs that align with their interests. The Foundation was founded on the premise that generosity can unlock an individual's potential and strengthen the community as a whole for everyone who lives here. We work in partnership with those who are committed to ensuring greater Milwaukee is a vibrant, economically thriving region that comprises welcoming and inclusive communities providing opportunity, prosperity and a high quality of life for all.



About the

MEDICAL COLLEGE OF WISCONSIN

Every great life-changing discovery begins the same way—with new knowledge. It can change everything, from a single life to the future of entire communities. That's why academic medicine, and the continuous pursuit of knowledge, is at the center of everything we do. The Medical College of Wisconsin brings a synergy between the best medical education, research and patient care. Tomorrow's discoveries happen right here alongside the very people who bring those lessons to our students. Every bit of knowledge, and every advancement, provides our students with an unprecedented, collaborative learning environment, and helps improve the vitality and care of our communities.



About the

ROYAL CAPITAL GROUP

At Royal Capital, having the opportunity to serve our communities in such an intimate and catalytic manner, is a privilege that we carry with high appreciation. From housing, retail, philanthropy, and community services, we are grateful for the opportunity to provide quality experiences that stretch beyond bricks and mortar. With a disciplined strategy and intentional execution, our efforts have led to the development of quality sustainable communities, while achieving the double bottom line for our investors and partners. We are proud to be considered leaders in urban development, and we maintain our excitement to build, create, and be afforded the opportunity to "color outside the box."



This initiative is also part of the Foundation's Thriving Communities efforts.

Greater Milwaukee Foundation 5