



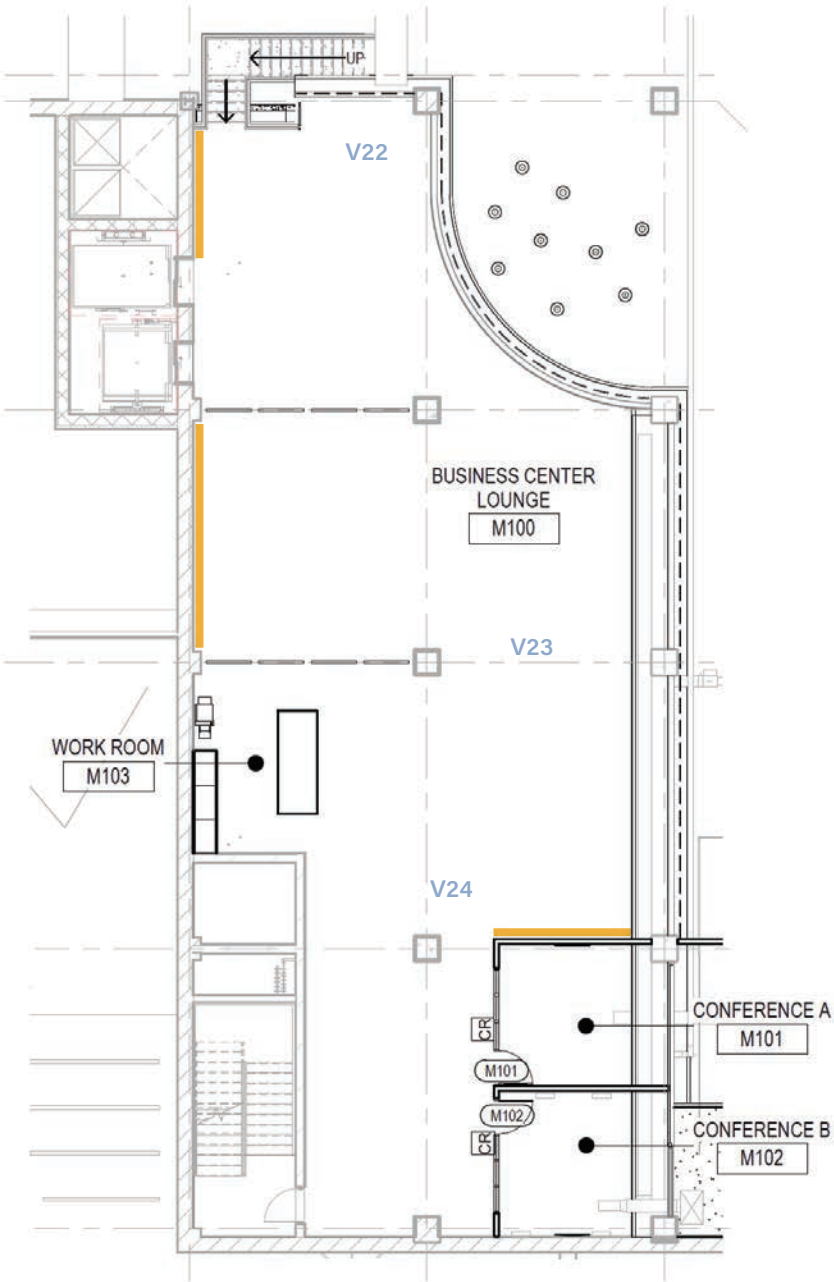
OVERVIEW

# First Floor Plan: Types of Art Opportunities



OVERVIEW

# Mezzanine Floor Plan: Types of Art Opportunities



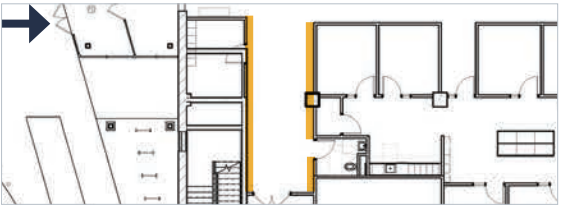
PLAN KEY

- Type A**  
*First Floor Window Display Cases  
and Community Space Walls*

RENDERINGS

# First Floor: View 1: Storage + Restroom Corridor

*All blank walls visible are eligible for TYPE A artwork display; structural columns are not eligible for display. Standard wall height in this area is 8'-4". Sculpture/3D work will also be considered in this area.*



Location on Floor Plan

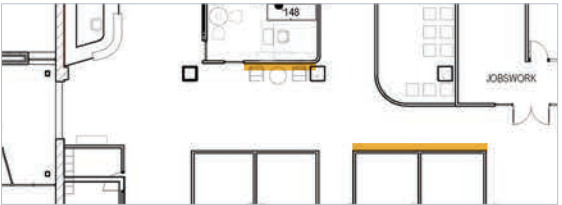




RENDERINGS

# First Floor: View 2: South Lobby Corridor

*All blank walls visible are eligible for TYPE A artwork display; structural columns are not eligible for display. Standard wall height in this area is 8'-4". Sculpture/3D work will also be considered in this area.*



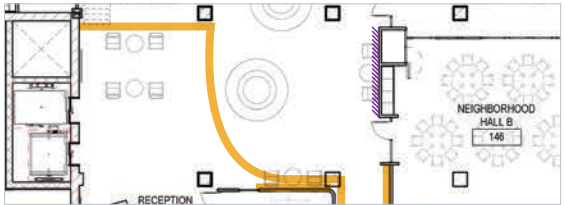
Location on Floor Plan



RENDERINGS

# First Floor: View 3: Reception Seating

Blank white walls visible are eligible for TYPE A artwork display; structural columns are not eligible for display. Standard wall height in this area is 8'-4" while mezzanine wall height (above ledge) is between approx. 5'-7" and 6'-9". Outlined area will be considered for mural(s). See Page 36 for details on TYPE C opportunity.



Location on Floor Plan

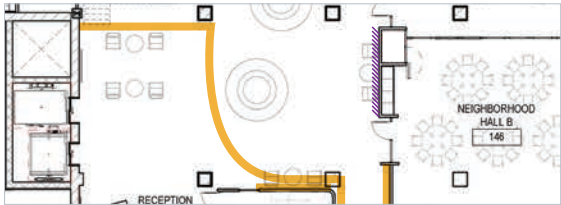




RENDERINGS

# First Floor: View 4: Reception Seating

*Blank white walls visible are eligible for TYPE A artwork display; structural columns are not eligible for display. Standard wall height in this area is 8'-4" while mezzanine wall height (above ledge) is approx. 5'-7". Outlined area will be considered for mural(s).*



Location on Floor Plan

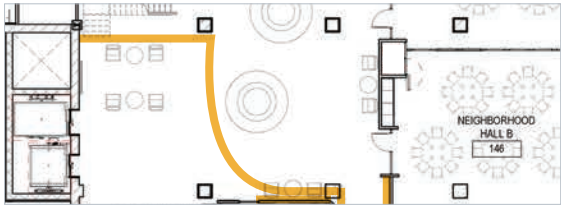




RENDERINGS

# First Floor: View 5: Reception Seating + Mezzanine Stair

*Blank white walls visible are eligible for TYPE A artwork display; structural columns are not eligible for display. Standard wall height in this area is 8'-4" while mezzanine wall height (above ledge) is approx. 5'-7". Outlined area will be considered for mural(s).*



Location on Floor Plan

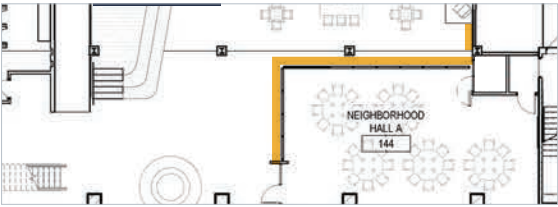




RENDERINGS

# First Floor: View 6: Neighborhood Hall

*Blank white walls visible are eligible for TYPE A artwork display; structural columns are not eligible for display. Standard wall height in this area is 8'-4" while mezzanine wall height (above ledge) is approx. 6'-9". Outlined area will be considered for mural(s).*



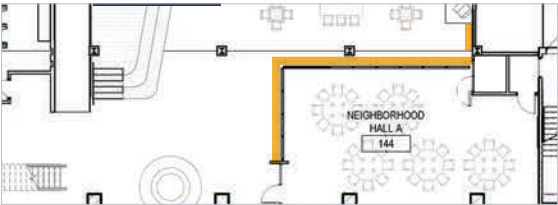
Location on Floor Plan



RENDERINGS

# First Floor: View 7: Neighborhood Hall A

*Blank white walls visible are eligible for TYPE A artwork display; structural columns are not eligible for display. Standard wall height in this area is 8'-4" while mezzanine wall height (above ledge) is approx. 6'-9". Outlined area will be considered for mural(s).*



Location on Floor Plan

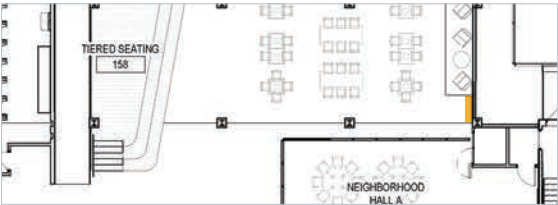




RENDERINGS

# First Floor: View 8: Seating Area

*Blank white wall visible is eligible for TYPE A artwork display; woodwork not eligible for display.  
Sculpture/3D work will also be considered in this area.*



Location on Floor Plan

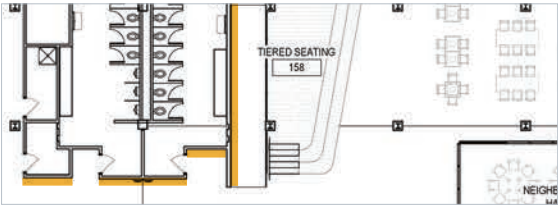




RENDERINGS

# First Floor: View 9: Stage + Tiered Seating

Blank white walls visible are eligible for TYPE A artwork display; structural columns are not eligible for display. Standard wall height in this area is 15'-0". Outlined area will be considered for mural(s).



Location on Floor Plan

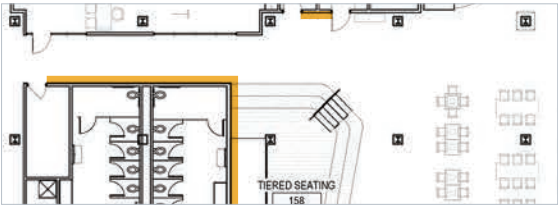




RENDERINGS

First Floor: View 10: Stage + Tiered Seating

Blank white walls visible are eligible for TYPE A artwork display; structural columns are not eligible for display. Standard wall height in this area is 15'-0".  
Outlined area will be considered for mural(s).



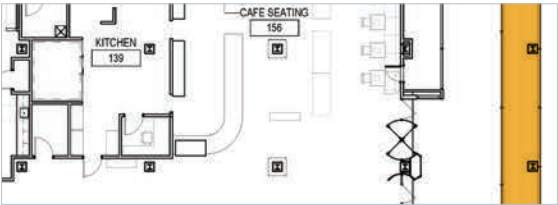
Location on Floor Plan



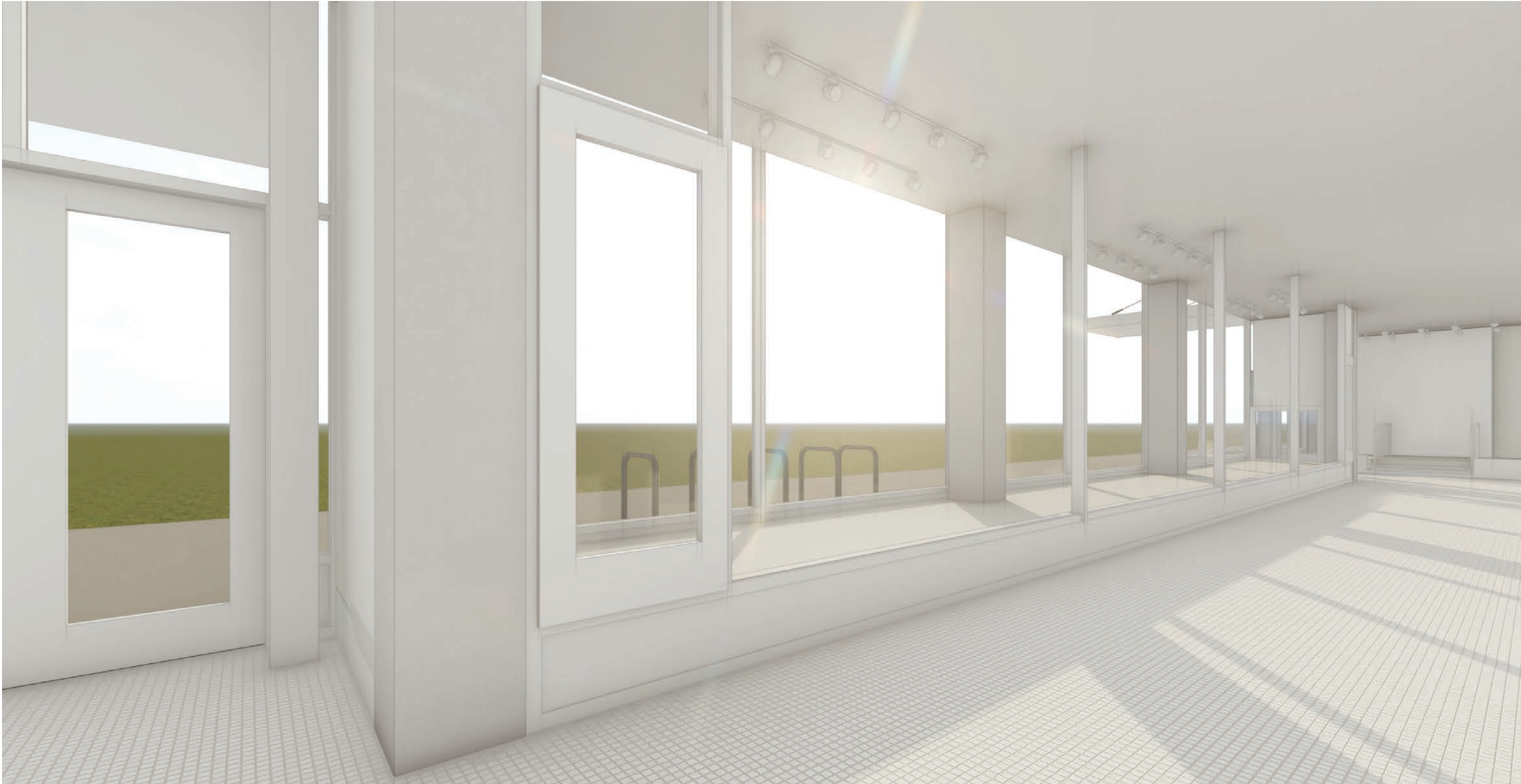
RENDERINGS

First Floor: View 11: Case A

Open-air (no interior glass) display case for TYPE A artwork display; columns may be eligible for display. Visible from Martin Luther King Jr. Drive and building interior.  
Case Dimensions: approx. 5'-8" depth x 58' length x 15' height



Location on Floor Plan





RENDERINGS

First Floor: View 12: Case B

*Glass front display case for TYPE A artwork display; columns are not eligible for display. Visible from building interior.*  
*Case Dimensions: approx. 6'-1" depth x 37'-4" length x 15' height*



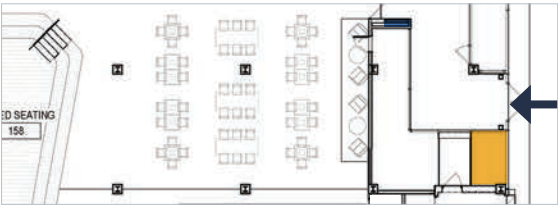
Location on Floor Plan



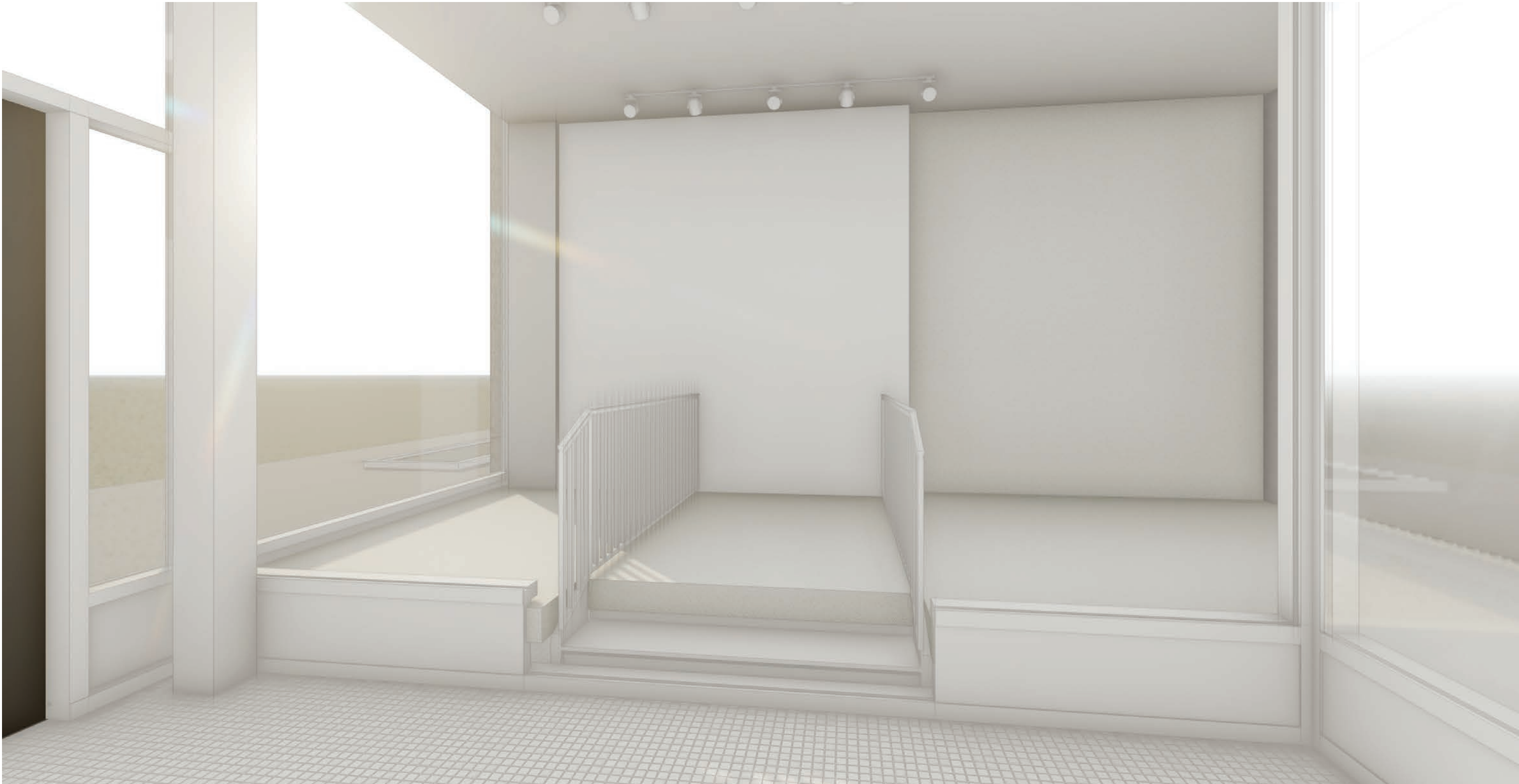
RENDERINGS

# First Floor: View 13: Case C.1

Open-air (no interior glass) display case for TYPE A artwork display; staircase splits area from remainder of case. Visible from Martin Luther King Jr. Drive and building interior.  
Case Dimensions: approx. 9'-2" depth x 5'-7" length x 15' height



Location on Floor Plan

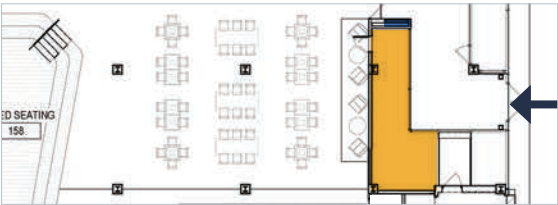




RENDERINGS

# First Floor: View 14: Case C.2

Mixed front display case for TYPE A artwork and TYPE C collaborative display; columns are not eligible for display. Visible from building interior.  
Case Dimensions: approx. 6'-1" depth x 17' length (behind glass) and 9'-2" depth x 10'-9" length (open-air) x overall 15' height



Location on Floor Plan





RENDERINGS

First Floor: View 15: Kitchen + Cafe

View for building context only.



Location on Floor Plan





RENDERINGS

# First Floor: View 16: Cafe Seating + Case D

Display case for TYPE A artwork display; woodwork and columns are not eligible for display. Visible from Garfield Avenue; windowed sections visible from building interior.  
Case Dimensions: approx. 5' depth x 83'-6" length (centered columns every 21'-1") x 15' height



Location on Floor Plan



RENDERINGS

First Floor: View 17: Cafe North

Blank walls visible are eligible for TYPE A artwork display. Standard wall height in this area is 15'-0".  
Sculpture/3D work will also be considered in this area.



Location on Floor Plan

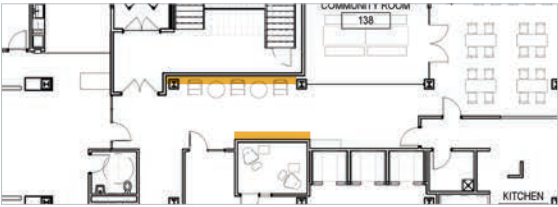




RENDERINGS

# First Floor: View 18.1: North Corridor

*Blank walls visible are eligible for TYPE A artwork display. Standard wall height in this area is 15'-0".*



Location on Floor Plan



RENDERINGS

First Floor: View 18.2: North + West Corridors

Blank walls visible are eligible for TYPE A artwork display. Standard wall height in this area is 15'-0".



Location on Floor Plan

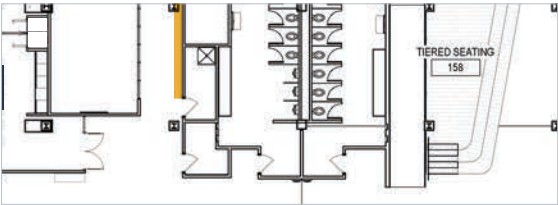




RENDERINGS

First Floor: View 19: West Corridor

Blank walls visible are eligible for TYPE A artwork display. Standard wall height in this area is 15'-0".



Location on Floor Plan



RENDERINGS

First Floor: View 20.1: South Corridor

Blank walls visible are eligible for TYPE A artwork display. Standard wall height in this area is 15'-0".



Location on Floor Plan





RENDERINGS

First Floor: View 20.2: South Corridor

Blank walls visible are eligible for TYPE A artwork display. Standard wall height in this area is 15'-0".



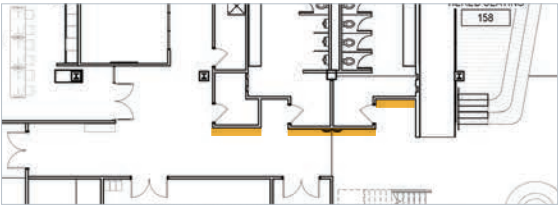
Location on Floor Plan



RENDERINGS

# First Floor: View 21: South Corridor

*Blank walls visible are eligible for TYPE A artwork display. Standard wall height in this area is 15'-0".*



Location on Floor Plan





RENDERINGS

First Floor: Not Pictured

1

Case E

Glass front display case for TYPE A artwork display; columns may be eligible for display. Only visible from Garfield Avenue.  
Case Dimensions: approx. 4'-7" depth x 60'-11" length (centered columns every 21'-1") x 15' height

2

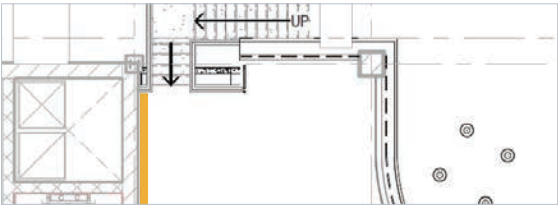
Case F

Glass front display case for TYPE A artwork display; columns may be eligible for display. Only visible from Garfield Avenue.  
Case Dimensions: approx. 3'-7" depth x 20'-6" length x 15' height

RENDERINGS

# Mezzanine: View 22: Business Lounge

Blank walls visible are eligible for TYPE A artwork display; structural columns are not eligible for display. Standard wall height in this area is 6'-2".



Location on Floor Plan





RENDERINGS

# Mezzanine: View 23: Business Lounge

Blank walls visible are eligible for TYPE A artwork display; structural columns are not eligible for display. Standard wall height in this area is 6'-2".



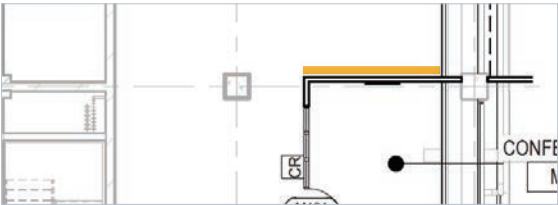
Location on Floor Plan



RENDERINGS

# Mezzanine: View 24: Business Lounge Conference

*Blank walls visible are eligible for TYPE A artwork display; structural columns and brick are not eligible for display. Standard wall height in this area is 6'-2".*



Location on Floor Plan





**ThriveOn**  
COLLABORATION

---

**Kahler Slater**

---